

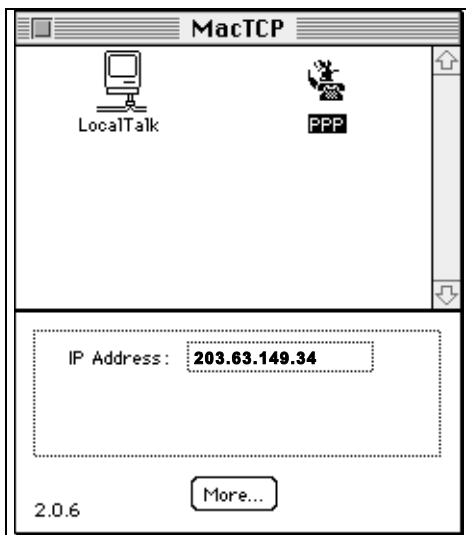
# INSTALLATION INSTRUCTIONS FOR MACINTOSH TO CONNECT TO TECH INFO INTERNET SERVICE

The 33.6k modem number is: <b>(03) 9432 7222</b>	The 56k modem number is: <b>(03) 9433 4444</b>
Home page for TECH INFO is: <b>http://www.techinfo.com.au</b>	Primary name server address: <b>203.63.149.1</b>
Mail server name is (both POP3 & SMTP): <b>mail.techinfo.com.au</b>	Secondary name server address: <b>203.63.149.2</b>
Proxy server name is: <b>proxy.techinfo.com.au</b> on port: <b>8080</b>	
News server name is: <b>news.techinfo.com.au</b> on port: <b>119</b>	

The software you have been given is on 3 diskettes. The diskettes contain a copy of **FREEPPP**, **MS Internet Explorer V2.0 for Mac** (which includes e-mail and news facilities) and **Eudora V1.0 for Mac** (an alternate e-mail package)

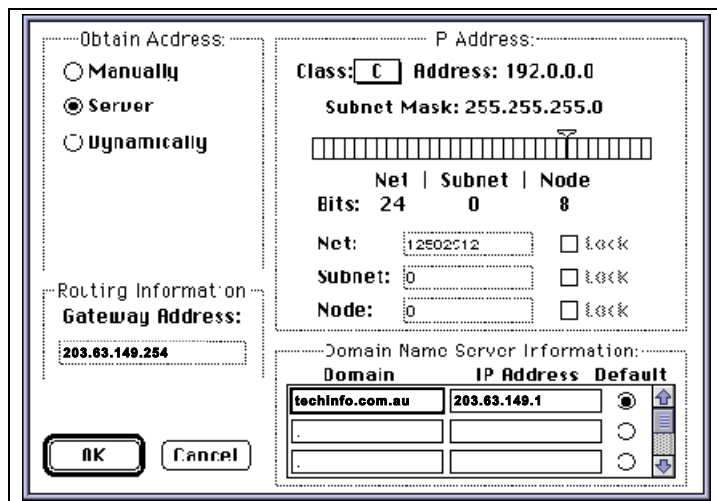
Insert Diskette 1 and run the setup utility. Once installed, please follow the instructions below to properly setup each of the required components.

## Configuring MacTCP



Launch the **MacTCP** control panel. A window similar to the one shown to the right will appear.

The number shown in the IP Address field might be different. It will show your last IP address assigned to you by a server to which you have connected.



Select **PPP** and press the **More...** button.

### Obtain Address

Make sure you select the **Server** "radio button". This indicates to PPP that the IP address will be provided by the TECH INFO server when you dial in.

### Routing Information

This indicates the MacTCP gateway address assigned by the FL server. You cannot modify this value.

### IP Address

Select **C** from the popup menu next to the word "Class". Next, select with your mouse the handle over the series of adjoining boxes and move until the **Subnet Mask** field displays the value **255.255.255.0** as shown in the graphic above.

### Domain Name Server Information

Enter the values as shown below in the first three rows of the 3-row table shown in the bottom right corner. These values are:

Domain	IP Address
techinfo.com.au	203.63.149.1
.	<blank>
.	<blank>

Important : Notice the period characters in the Domain column values and the second two lines for IP address are blank. Once these values -with the periods- are entered, select the first one as the default DNS (Domain Name Server).

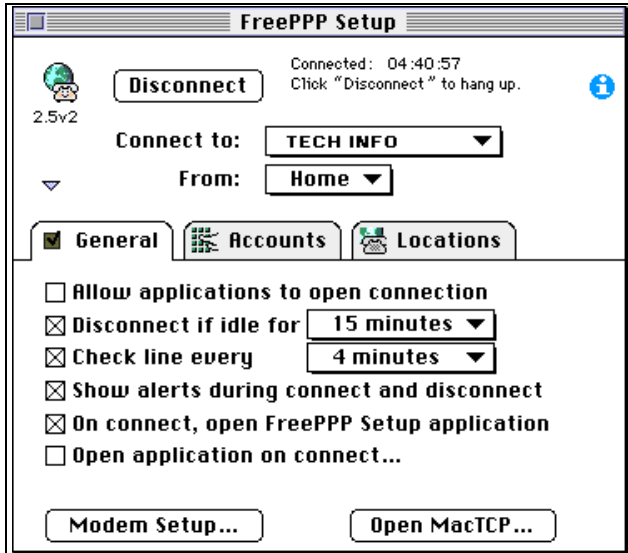
Click **OK**, close the **MacTCP** control panel and restart your Mac.

### Using FreePPP Setup



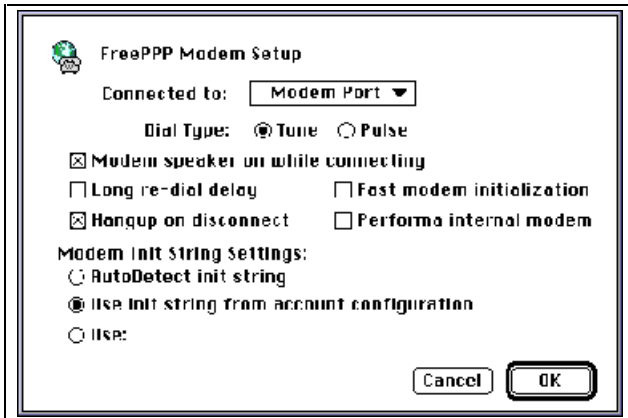
Launch the **FreePPP Setup** application. A window similar to the one to the left will appear on your desktop.

### General settings



Click the blue triangle in the left bottom corner to view the settings. The window will change to one similar to this:

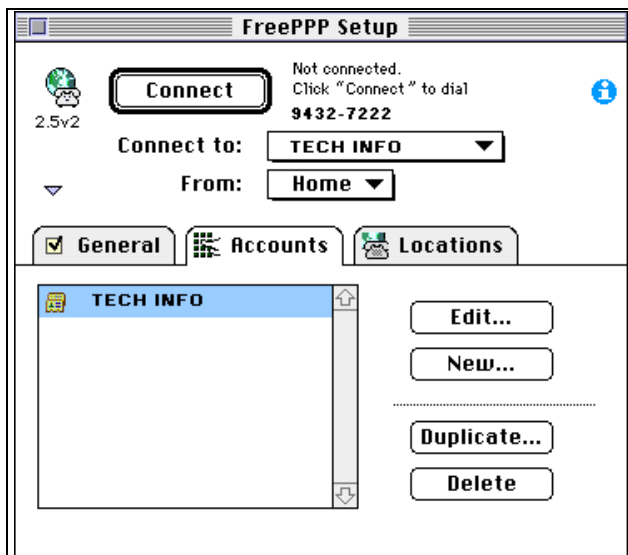
Click the **Modem Setup...** button. A dialog box similar to the following will appear on your screen:



If your modem is not connected to the **Modem Port** then change the **Connected to** setting, else duplicate the values as above.

(If you are using a Mac Performa with an internal modem, click the appropriate checkbox)

When done, click the **OK** button to return to the **FreePPP Setup main** window.



### Accounts settings

The **TECH INFO** name will not be listed in the **Connect to** popup menu options in FreePPP Setup main window. The next section deals with creating such an entry.

Click the **Accounts Tab** in FreePPP Setup main window. The display will change to something similar to the following:

### Account parameters

Press the **New...** button to create a setting suitable for connection to **TECH INFO Internet**. A dialogue box similar to the following will appear on your screen:

If you have a 33.6k modem (or lower speed), you should insert **9432-7222** as the phone (modem dialup) number. If you have a 56k modem you should insert **9433-4444** as the phone number.

Enter the displayed information, using your own Username and Password as read **exactly** from the forms returned to you.

Click on the **Edit connection script...** button. A dialog box similar to the one below will show on your screen.

Copy the values and check the boxes as shown to the left with the following two exceptions:  
 Instead of **fred**, enter your loginname / user-id, and instead of **flintstone**, enter your password.

Click the **OK** button to return to the **Account setup**.

### Connection parameters

Click the **Connection** tab to view the connection setup parameters. The dialog box shown to the left will appear:

Set **Port Speed** to **57600bps**. Even though your modem's maximum connection speed might be less than that, FreePPP will manage to negotiate the appropriate one when connecting to the **TECH INFO** server.

Depending on the sort of cable you use between your Mac and modem, you will choose the type of Flow Control to set in this popup menu. The choice above reflects a hardware handshaking cable.

Use the appropriate Modem Init string for your modem model and make. A document included in the FreePPP distribution contains modem init strings for most modems. Unfortunately it's biased towards USA market brands.

The Modem Init string for NetComm's SmartModems is:  
**AT&F&D2&K3X3#K0#C0N3**

### Options parameters

Click the **Options** tab to continue the account setup. A window similar to the one below will show on your screen:

The image shows two overlapping windows from the FreePPP Setup application. The top window is the main 'Options' tab, and the bottom window is the 'Location Setup' sub-dialog.

**Main Options Tab:**

- Domain name: I'm not used
- Primary DNS: Me either
- Secondary DNS: Utto
- IP address:  Assigned by PPP server

**Location Setup Sub-dialog:**

- Location name: Home
- Location specific modem settings
- Area code: [ ]
- Long distance prefix: [ ]
- When area code does not match location area code: Do nothing
- Dial prefix: [ ]
- Long distance access code: [ ]
- Dial suffix: [ ]
- Buttons: Cancel, OK

Leave these values unchanged and press the **OK** button to return to the main FreePPP Setup window.

**Locations settings**

Click the **Locations** tab. An entry named **Home** should be there already. If not create one by clicking the **New...** button and entering the following data:

**Connecting to TECH INFO Internet**

Launch the **FreePPP Setup** application.

Select **TECH INFO** from the **Connect to** popup menu and **Home** from the **from** popup menu.

Press the **Connect** button. PPP will start the connection procedure showing you where it's at during the intermediary phases.

Most importantly, it will tell you at what speed it was able to use for establishing the communication.

When the connection is successfully established, the dialog will disappear from your screen and the **Connect** button will be renamed to **Disconnect**.

**To close the connection**, launch the **FreePPP Setup** application if you have already closed it and press the **Disconnect** button.

**Last updated: December-97**